

YAMAZAKI MAZAK CORPORATION

1-131 Takeda, Oguchi-cho, Niwa-gun, Aichi-pref., Japan
TEL : +(81)587-95-1131

www.mazak.com

- Specifications are subject to change without notice.
- This product is subject to all applicable export control laws and regulations.
- The accuracy data and other data presented in this catalogue were obtained under specific conditions. They may not be duplicated under different conditions. (room temperature, workpiece materials, tool material, cutting conditions, etc.)
- Unauthorized copying of this catalogue is prohibited.



MAZATROL DX 25.04.0 G 99J519625E0



MAZATROL *DX*

Innovative digital manufacturing solution

MAZATROL DX is an advanced software solution that delivers the same powerful functions as MAZATROL CNC enhancing the production process with innovative digital integration. By effectively utilizing digital data, MAZATROL DX streamlines on-site operations, significantly reduces manufacturing lead times, and boosts overall productivity. Designed to support seamless and efficient production, MAZATROL DX helps manufacturers enhance their competitiveness in today's fast-paced industry.

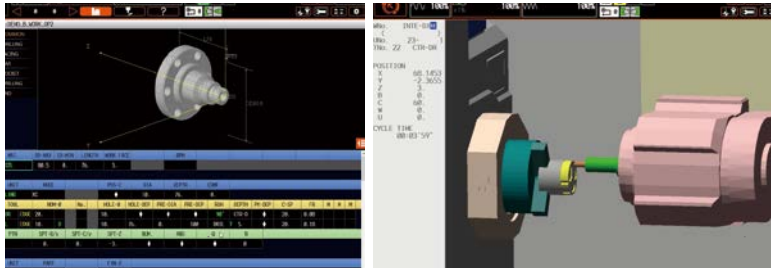
Seamless Digital Manufacturing with MAZATROL DX

Seamless data communication between offices and machines is achieved by connecting compatible machines and networks. This comprehensive digital manufacturing solution leverages the latest digital data to address challenges on the shop floor. Additionally, it enables the same MAZATROL CNC operation on an office PC, ensuring efficiency and flexibility in production management.



Conventional MAZATROL CAM functions

- SOLID MAZATROL
- VIRTUAL MACHINING
- CUTTING ADVISER



MAZATROL DX additional functions

- QUICK QUOTE
- TOOL LIBRARY
- SETUP GUIDE



New functions included in software updates

MAZATROL *DX*

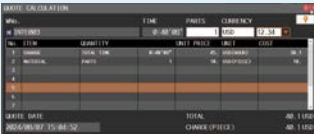
A flat-rate software service that digitally transforms the setup process

MAZATROL DX is a powerful software solution that digitizes setup processes, enabling the creation of MAZATROL conversational programs directly from an office PC.

QUICK QUOTE

Easy and fast quotations can be calculated from the 3D model of a finished part.

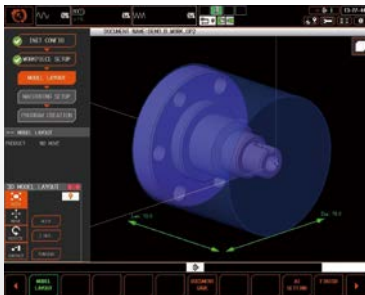
- Automatic calculation of machining cost, machining time and required tools
- Inexperienced employees are able to create a quotation.



SOLID MAZATROL

MAZATROL programs are automatically generated from 3D models so time required for programming can be significantly reduced.

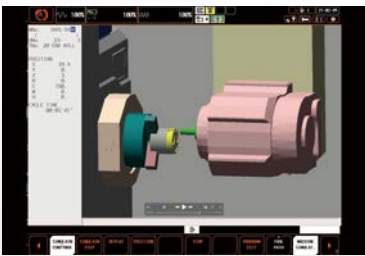
- Inexperienced employees are able to create a quotation.



VIRTUAL MACHINING

High-speed, high-accuracy simulation detects potential interference. Easily configure tools, chuck jaw shapes, and program work offsets for optimal machining performance.

- Duplication of machining movements on PC
- Automatic setting of tool model and tool length by inputting tool information



CUTTING ADVISER

Machining condition is adjusted and optimized by analyzing machining process.

- Visualizing machining process including tool data, machining time, amount of discharged cutting chips and machining load.
- Detailed adjustments are available by analyzing actual machining results.



SETUP GUIDE (On-machine setup instructions)

On-machine setup instructions are automatically generated based on machining programs and tool data. Operators can easily complete setup by simply attaching tools and materials following instructions on the screen.



SETUP GUIDE (Automatic measurement)

Setup and mounting errors can be adjusted with automatic measurement based on program information. The time required for measurement is greatly reduced.



Robot setup

EZ LOADER APP

Robot setup operations available on MAZATROL CNC

The Ez LOADER can be operated directly from MAZATROL CNC, eliminating the need for a teaching pendant or teaching. With the push of a button, the necessary robot operation data is automatically retrieved from the MAZATROL program, enabling quick and easy setup for a wide variety of workpieces in a robot cell system.



OFFICE
working on office PC

MACHINE
working in the factory

Production

Digital setup

On-machine setup

The same operation of MAZATROL CNC functions available both on a machine control and office PC by MAZATROL DX

QUICK QUOTE

■ Accurate quotation can be created easily and quickly from 3D models.

Machining time, costs and tools are automatically calculated using 3D models. Quotations of machining costs which are already created using MAZATROL programs are available. Information used in quotations is stored and it can be used in later processes.



Search function for required tools

Tools required for machining are searched from the registered tool data. An accurate quotation can be created based on cutting conditions set on each tool.

TNo.	TOOL	PART	NOM-Ø	TIME
5	T-DRILL		10. A	0:00'56"
2	GENERAL	OUT	2. A	0:02'37"
4	END MILL	OUT	3. A	0:00'51"

Support for creating quotations

The information can be output into text format and used to create a quotation.

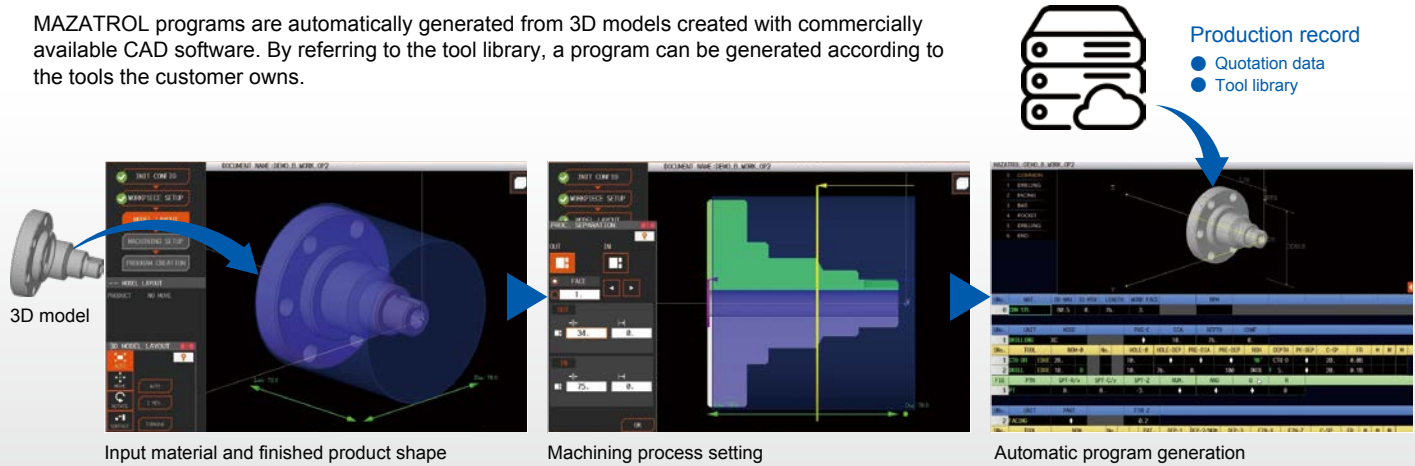
No.	ITEM	QUANTITY	UNIT PRICE	UNIT	COST
1	CHARGE	TOTAL TIME 33:25'47"	190 USD (HOUR)		3,442
2	MATERIAL COST	NUM 300	48 USD (PIECE)		14,400
3	FIXTURE COST	1	70 USD (PIECE)		70
4					
5					
6					
7					
TOTAL					17,912 USD
CHARGE (PIECE)					50 USD

Output in the text format (CSV) is available.

SOLID MAZATROL

■ Extremely fast programming using 3D models

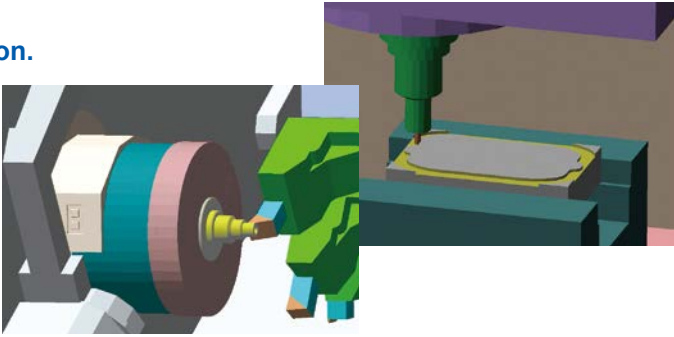
MAZATROL programs are automatically generated from 3D models created with commercially available CAD software. By referring to the tool library, a program can be generated according to the tools the customer owns.



VIRTUAL MACHINING

■ Machining shapes and interference can be checked by performing high-speed and high-accuracy simulation.

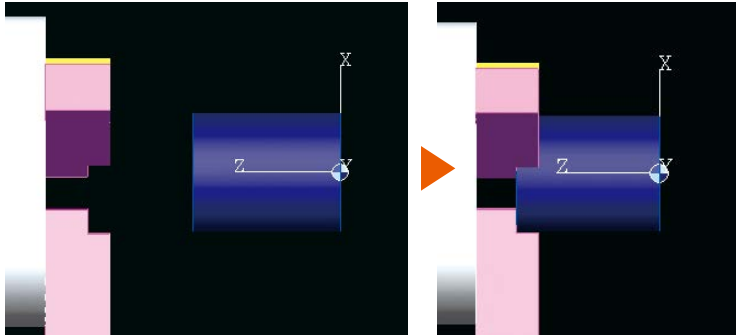
Accurate machining simulations enable higher productivity from the first product. Since the tool model and tool length required for simulation can be automatically set, a small number of adjustments are required during on-machine setup. Program zero point is automatically set by selecting length of material and height of jaws.



Automatic setting of tool models and tool lengths



Automatic setting of program zero point



SETUP GUIDE

■ Cutting conditions are adjusted and optimized by analyzing the machining process.

Machining process information such as tools, machining time, chip discharge and machining loads is shown on the screen. Detailed adjustments of cutting conditions are available by analyzing results of past machining data.



Smooth on-machine setup by automatically generated setup instructions

SETUP GUIDE

On-machine setup instructions are automatically created from project data transferred from MAZATROL DX, showing program, tool data, procedure of tool mounting and tool measurement on the screen. The optimized setup instruction allows efficient on-machine setup by comparing a transferred project data and machine conditions.

■ Setup instructions

Setup is easily completed by mounting tools and workpieces following the screen instructions.

Minimum setup shortens preparation time. Inexperienced operators are able to complete setup following the instructions.

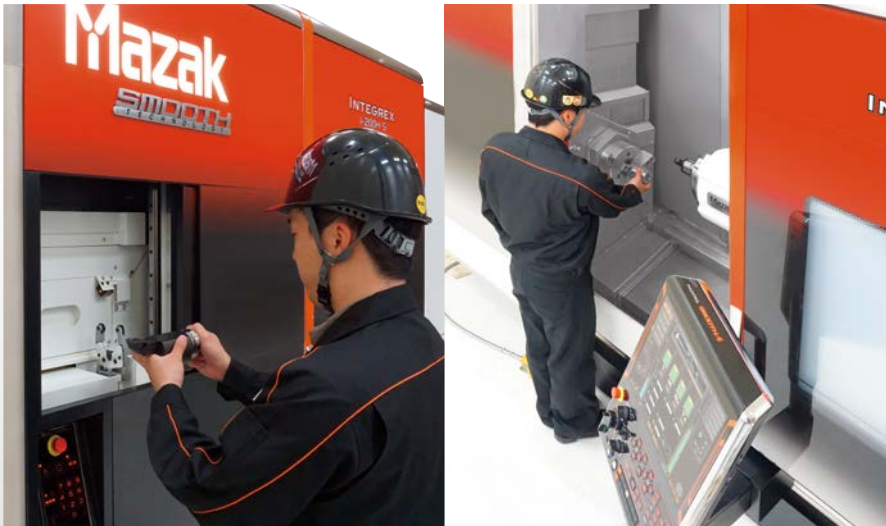
- Machining programs
- Tool data
- Coordinate data
- Machining parameters



■ Automatic measurement of tools and coordinate data

Automatic tool measurement and automatic coordinate compensation functions contribute to shortened time for the measurement.

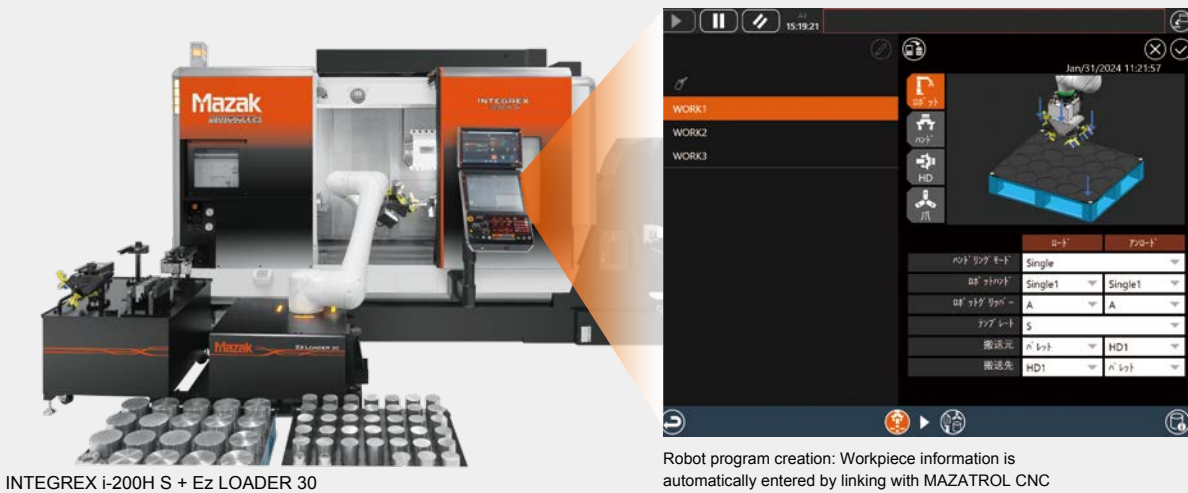
Automatic measurement functions supports an efficient on-machine setup without errors.



High-efficiency operation and smooth robot setup integration with Ez LOADER APP

Ez LOADER APP

Dedicated application for enabling robotic operation on MAZATROL CNC
Easy robot operation by conversational programming

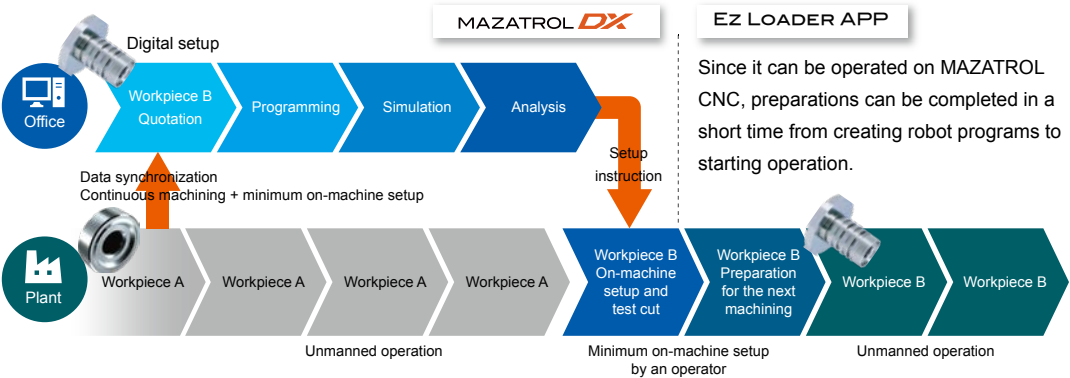


INTEGREX i-200H S + Ez LOADER 30

Robot program creation: Workpiece information is automatically entered by linking with MAZATROL CNC

Proposal for high-efficiency operation in combination with MAZATROL DX

While mass-produced workpiece A is being machined, preparations for new workpiece B are made in advance in the office. By minimizing on-machine setup work and maximizing machining time, you can achieve highly efficient operation.



MAZATROL DX Installation

- 1

Order MAZATROL DX
The MAZATROL DX license is a 3-year subscription.
Please contact us for more details about the product.
- 2

Notification of your account and license registration delivered
Notification of license and account registration, along with instructions for downloading MAZATROL DX, is delivered via an e-mail after the registration is completed.
- 3

Log in to the Mazak software web portal and download the software products
Log in to the Mazak software web portal from your PC. You can download and install MAZATROL DX from the Download Center. If you are using the free trial, it is not required to download the software again.
- 4

Start to use MAZATROL DX
You can log in to MAZATROL DX using the account ID and password from the Mazak software web portal.
The subscription starts from the first login to MAZATROL DX after the license is issued.
- 5

Software update
Updated software products can be downloaded from the Download Center.
- 6

Renew the MAZATROL DX license
Renewal notification is sent via e-mail and a renewal reminder is displayed on the MAZATROL DX screen starting from 3 months before the renewal date.



[Windows PC requirements (Desktop and laptop) with internet connection]

	Recommended specification	Required specification
OS ^{*1}	Windows 11 64bit Pro ^{*2*3} Windows 10 64bit Pro ^{*2*3} Windows 8.1 64bit Professional ^{*3}	Windows 11 64bit Pro (Home) ^{*2*3} Windows 10 64bit Pro (Home, Pro) ^{*2*3} Windows 8.1 64bit Professional (Standard, Professional) ^{*3}
CPU	Core i7 or higher ^{*4}	Celeron 2.2 GHz or higher
Storage	8 GB or more	4 GB or more
HDD	120 GB minimum available space on C: drive	48 GB minimum available space on C: drive
Display	Resolution : 1920 X 1080 or higher Display color : 16.77 million colors or more colors Multi-touch screen ^{*5}	
USB	USB 2.0 or higher	
Data transfer rate	100 / 1000 Mbps	100 Mbps

^{*1} Windows needs to be installed in C: drive of PC.
^{*2} MAZATROL DX is not compatible with the virtual desktop function of Windows 10 and Windows 11. When you try to start MAZATROL DX while using the virtual desktop function, please operate the desktop which starts MAZATROL DX.
Double startup cannot be performed for MAZATROL DX and the alarm "[E1023] Already started" will be displayed if MAZATROL DX is started with another desktop.
Please avoid using the tablet mode in Windows 10 and Windows 11 as the screen cannot be displayed properly.
^{*3} Problems occurred on 32-bit OS are not supported.
^{*4} Multi-core CPU is recommended.
^{*5} Multi-touch screen is not required when mouse and keyboard are used.

Q & A

Please refer to the following Q&As about MAZATROL DX license contract and the Mazak software web portal account.
If you have any question, please contact us for more details.

Q What is the cost of MAZATROL DX compared with the previous software^{*1}?

A MAZATROL DX costs about 1/3 less than the previous software^{*1} at the first installation.

MAZATROL DX is a flat-rate 3-year subscription and the cost at the first installation is less than the previous software.

^{*1} Smooth CAM Ai



Q Can I get several MAZATROL DX licenses?

A Yes. If you want several licenses, the same number of the Mazak software web portal accounts are required and need to be linked with each license.

Each MAZATROL DX license is authenticated with a Mazak software web portal account. One license cannot be used with several PCs at the same time.



Q Is the trial for MAZATROL DX free?

A Yes, the trial for MAZATROL DX is free.

After your account for the Mazak software web portal is created, you can download the software from the portal site and start your trial.
Please contact your local Mazak sales office for more details about the free trial.



Q Where are the programs created with MAZATROL DX saved?

A The programs created with MAZATROL DX are saved on the PC that the software is installed.

The programs and production data are not saved on the clouds but on the PC that MAZATROL DX is installed.

